

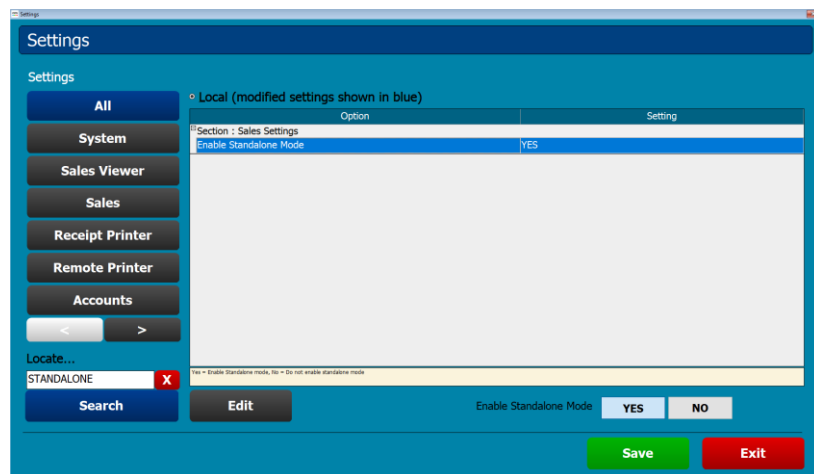
## Standalone Mode

### Introduction:

UNC Standalone mode for slave tills when the master is not available has been ported over from v8.8 with several improvements added. Standalone mode previously known as UNC in older versions of Touch has been reintroduced to Touch v9.1.017. This is to allow slave terminals to work with basic functionality if the master is unavailable.

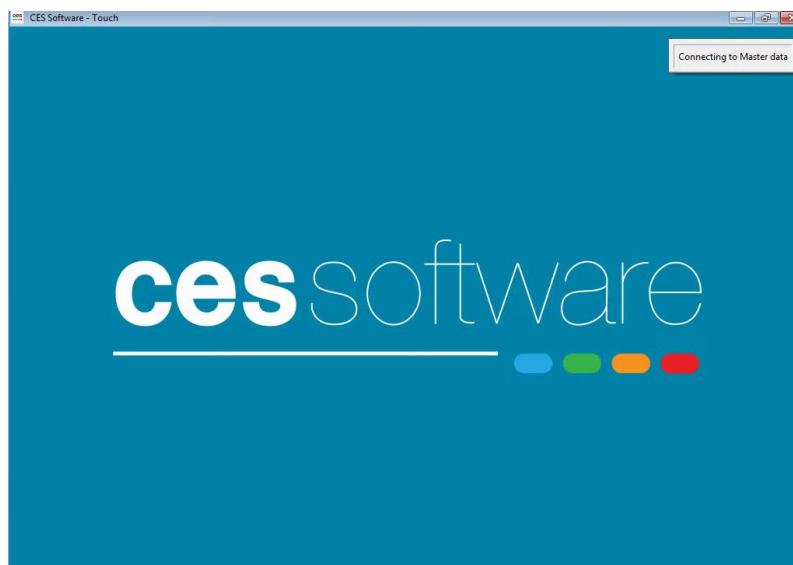
### Back Office Setting:

Screen below shows the setting 'Enable Standalone Mode'. This setting is enabled by default but can be turned off if required. There are no other settings required to configure standalone mode.



### Offline Data Update:

When Touch starts on a slave terminal the first thing it will do is attempt to connect to the master data. A message box showing 'Connecting to Master Data' will stay in the top right hand corner while it attempts to connect to the master.



In normal circumstances when the master is available slave terminals will do an offline data update during the start-up procedure. All the required data files from the master including the latest products and prices will be copied over to the slave terminals local data folder.

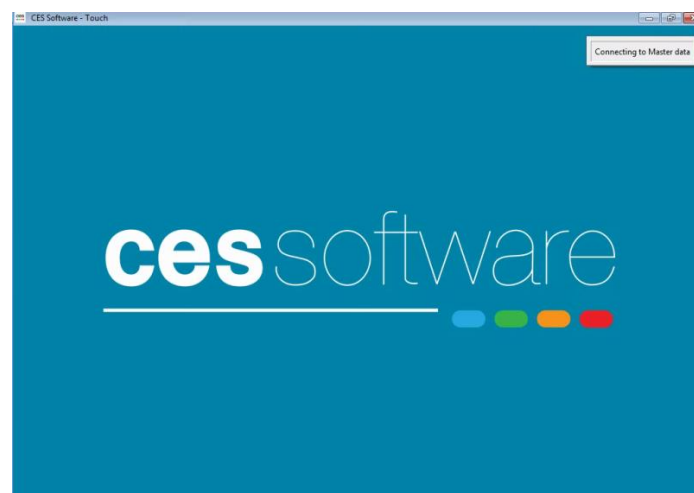
Should a slave terminal need to run in standalone mode it will use its local data that would have been updated when the terminal last started touch and successfully connected to the master.



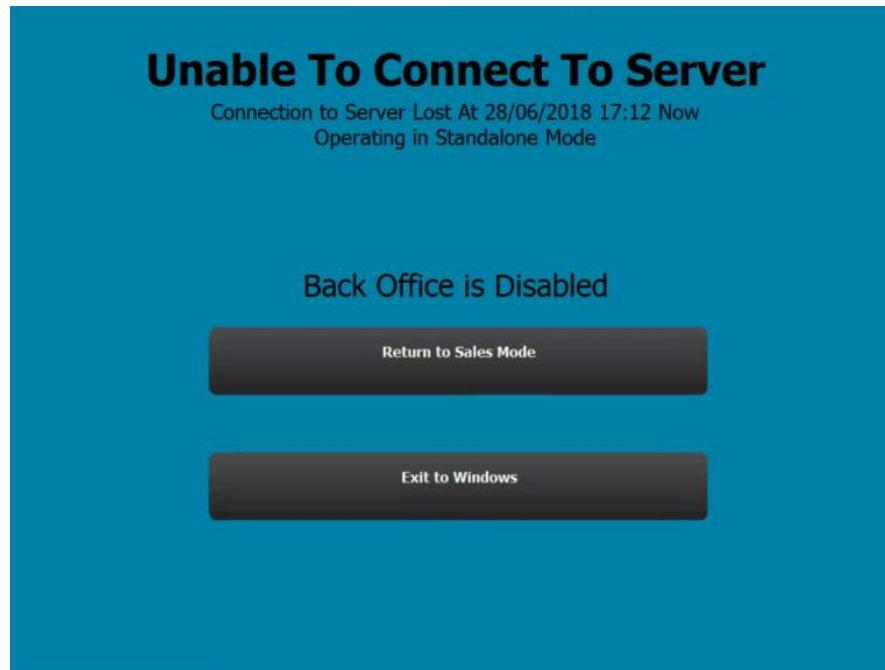
### **Standalone Mode:**

When starting Touch on a slave terminal if the message box showing 'Connecting to Master Data' stays in the top right hand corner for longer than usual that is a good indication that the slave terminal is unable to connect to the master data.

The message can stay in the top right corner for several minutes waiting for the response from Windows saying the master data folder is not available. The 'Connecting to Master Data' message will close quicker if the slave terminals network connection is disconnected. Disconnecting the network cable from the slave will speed up the process. Mapped drives work well for standalone mode because if Windows knows the mapped drive is unavailable it will also time out quicker.



When the 'Connecting to Master Data' message closes Touch will continue to load and will stop at the screen below. The user can then either press 'Return to Sales Mode' to run in standalone mode or press 'Exit to Windows' to close Touch.



When running in standalone mode the orange label at the top of the sales grid as shown below will be displayed.

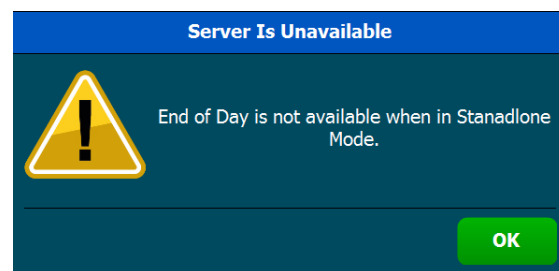


The idea with standalone mode is to allow slave terminals to run with basic functionality to enable trading when the master data is unavailable. Charge sheets, Customers and Back Office functions are not available when running in standalone mode.

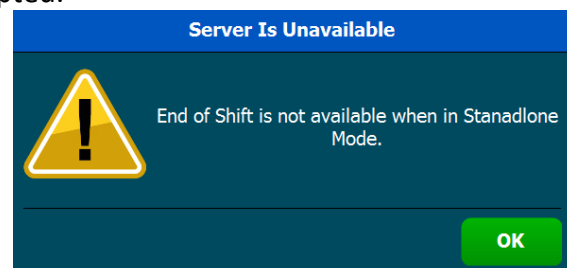
The message below will show if any function is attempted to be used that is not available when in standalone mode.



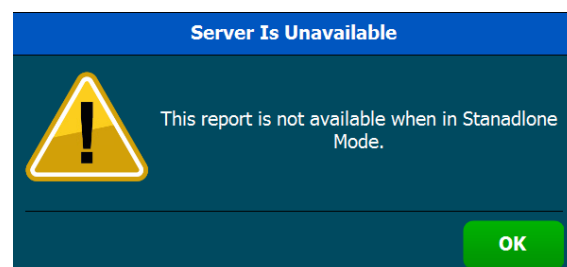
End of Day is not available when in standalone mode, the message below will show if an End of Day is attempted. When the master comes back online running the EOD will update the sales and stock levels on the master for that terminal.



End of Shift is also not available when in standalone mode, the message below will show if an End of Shift is attempted.



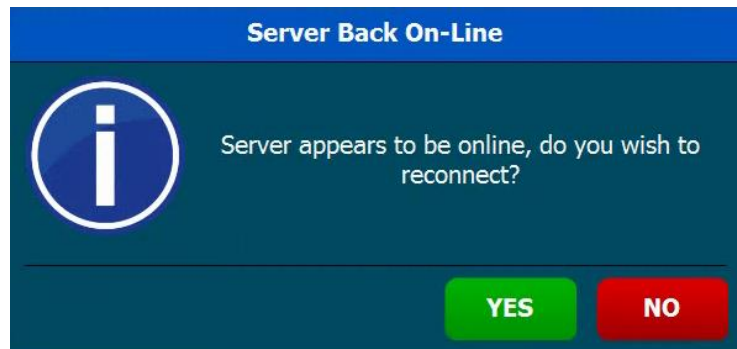
Only current reports are available when in standalone mode. The message below will show if any archive reports are attempted.



### Server back on-line:

If the server comes back on-line the message box below will show when the sales basket is empty. This message will not show if a sale is being processed with items in the sales basket but will prompt as the sale is completed.

Pressing YES will close and restart Touch and reconnect to the master as normal.



Pressing NO the below message will show and the terminal will remain in standalone mode until Touch is closed and restarted.

