

## Avery Scale setup for Windows 10

This document describes how to configure Touch to work with the Avery scale on Windows 10 / 64 bit OS.

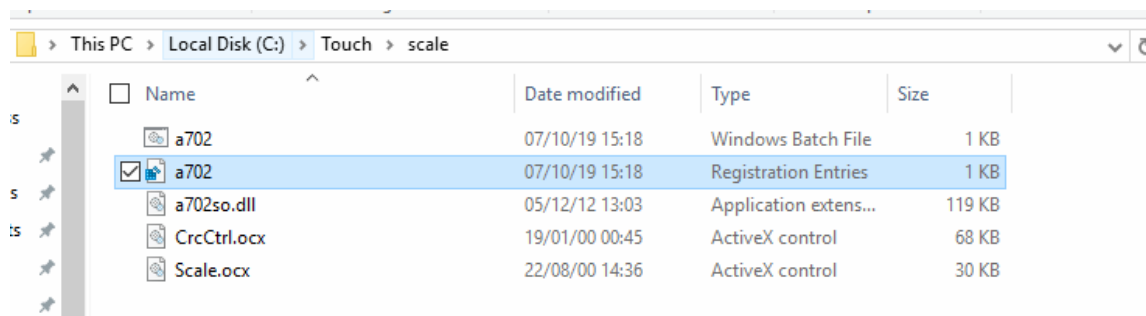
1. Ensure Touch is licenced for the Scale Link
2. Updated scale files can be found in all patches from v10.0.005 & 9.1.035 onwards with a \Scale\ subfolder and an updated AVERY\_SCALE\_SETUP form included
3. After patching up set up a button with the command AVERY\_SCALE\_SETUP\*FORM

The screenshot shows a software interface with a 'Command' field containing 'AVERY\_SCALE\_SETUP\*FORM' and a 'PLU' button. Below this is a large empty text area. At the bottom, there is a 'Caption' field with 'SCALE' and 'SET UP' entered, and an empty field below it.

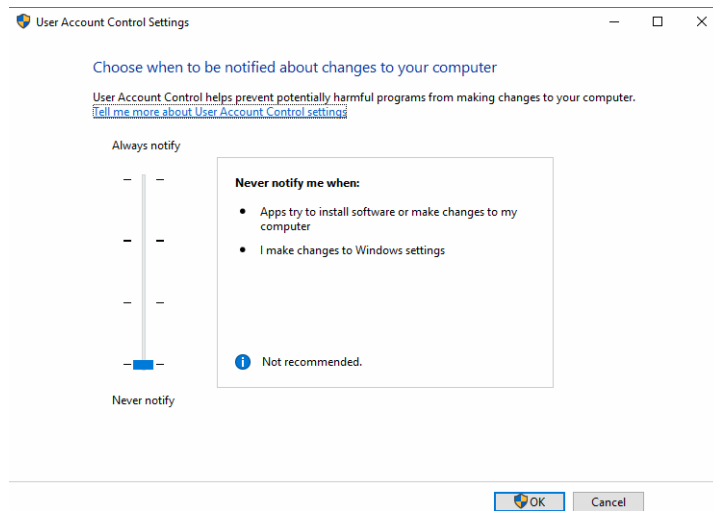
4. Press the **AVERY\_SCALE\_SETUP\*FORM** button And select the com port the scale is attached to and press the **Configure** button on the screen below

The screenshot shows a dialog box titled 'Avery Scale Setup'. It has a 'Port:' label and a dropdown menu showing 'Com 4'. At the bottom, there are two buttons: 'Configure' (green) and 'Close' (red).

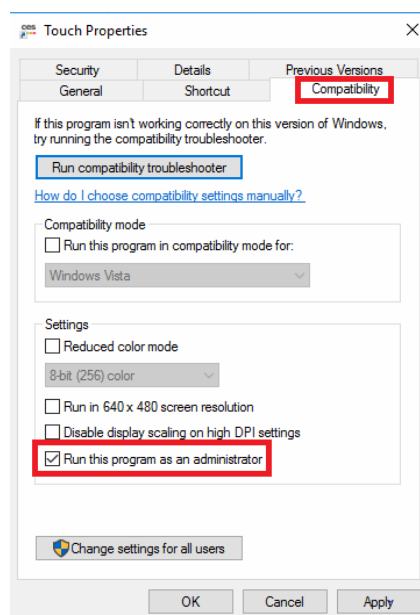
5. Go to the C:\Touch\Scale\ folder and click on the a702 reg file to run it



- Go into control Panel, User Accounts and turn off User Account control



- Right click on the Touch shortcut and go into properties, then into the compatibility tab and tick the option to Run as Administrator



- Finally start Touch and if all configured correctly you should see the Scale Initialised Successfully message

