

## Touch Auto Update

### Introduction:

An auto update system has been introduced on Touch version 10.0.015. Once on v10.0.015 or above Touch can be set to automatically check for updates using a touch.ini setting or can be done manually by using a new button command.

### Touch.ini Setting:

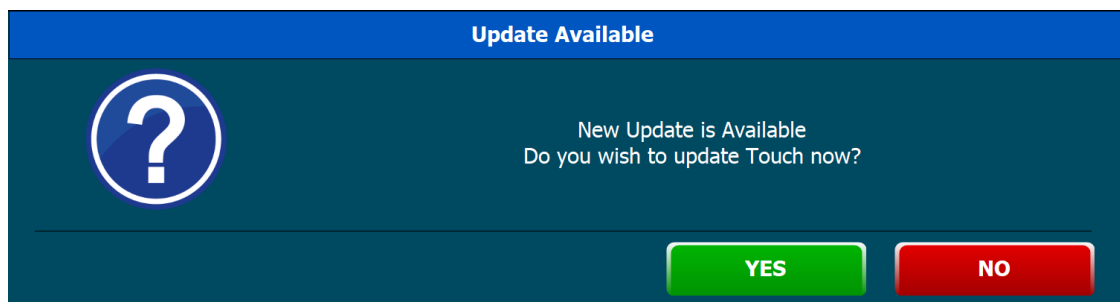
The touch.ini setting **AUTOUPDATE=YES** needs to be set on the master terminal only. With this setting in place the master terminal will check for updates in 2 places (1) when Touch starts and (2) after running the EOD.

### Button Command:

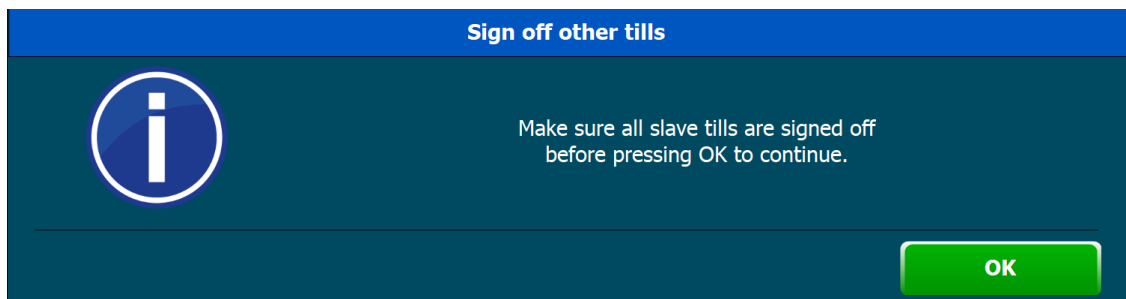
The button command to check for updates is **TOUCHUPDATES** and this function can only be run on the master terminal. Slave tills will prompt a message if the button is pressed saying 'This function only works on the master'. There is no need to have the touch.ini setting in place to use the button command.

### Master Terminal:

When the master terminal checks for updates using either method (touch.ini setting or the button command) the message below will prompt. The update file will automatically download at this stage, If the NO button is pressed the message box will close and no update will happen.



If YES is pressed the message below will then prompt and will stay on the screen until the OK button is pressed. It is important that all slaves are signed off when the master till does it update.



Once the OK button is pressed

1. Touch will exit and install the update
2. File checker will run
3. Touch will restart again

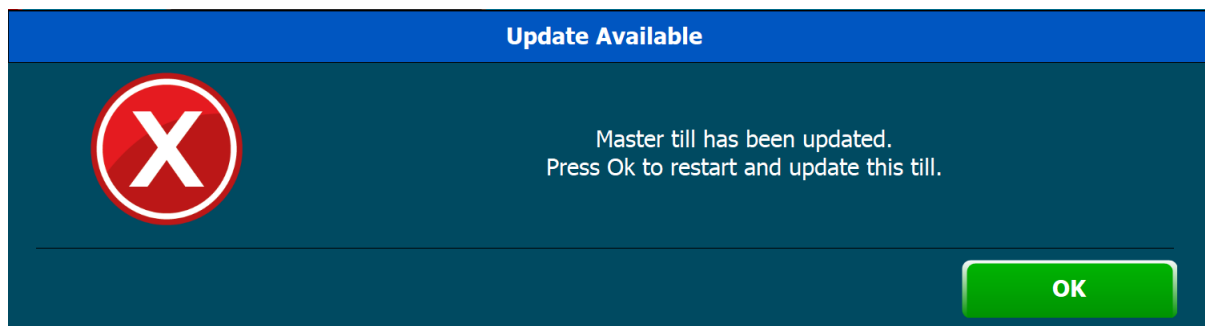
### Slave Tills:

The slave tills check the master terminal to see if an update is required by checking the version of Touch the master terminal is on. There are no settings required for the slave tills, if the master till has updated using either auto update method the slave tills will automatically copy the required files from the master and update themselves.

There are 2 places the slaves do the update check (1) when starting Touch and (2) on signing on. This is why it is important to make sure slaves are signed off when the master updates.

If a slave is not running Touch when the master does its update it will automatically update next time touch is started and no message will show.

If a slave is on the sign on screen when the master till updates the message below will show when the slave signs on.



Once the OK button is pressed

1. Touch will exit and install the update
2. File checker will run
3. Touch will restart again