

## Delivery Charge by Mileage

### Introduction:

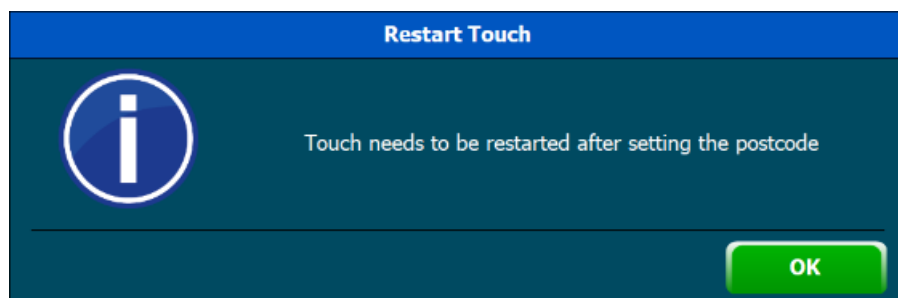
A new option is available on Touch v10.0.044 and above to calculate the delivery charge based on the mileage to the delivery address. The address longitude and latitude details are looked up via an API call in the background using the postcode entered when saving customer address details. Three new fields have been added to the Customer Addresses table to store the longitude, latitude and the distance to the delivery address.

### Delivery Charge Settings:

The delivery charge settings are done in sales mode using the button command SETUPDELIVERYPRICES that will open the screen below.

| From Mile | To Mile | Price |
|-----------|---------|-------|
| 0.00      | 2.00    | 2.00  |
| 2.00      | 4.00    | 3.00  |
| 4.00      | 6.00    | 4.00  |
| 6.00      | 8.00    | 5.00  |
| 8.00      | 10.00   | 6.00  |

- **Postcode:** – Enter the store postcode, this is the starting point for calculating delivery distances. **Note:** The message below will show after saving the store postcode, Touch must be restarted before this setting will fully take effect.



- **Delivery PLU:** - Enter the PLU used for the delivery charge this should be an open price PLU
- **Add** – Used to set up the delivery charges zones, will change to Save button when Add is pressed.

- **Edit:** - Used to edit existing delivery distance and price settings.

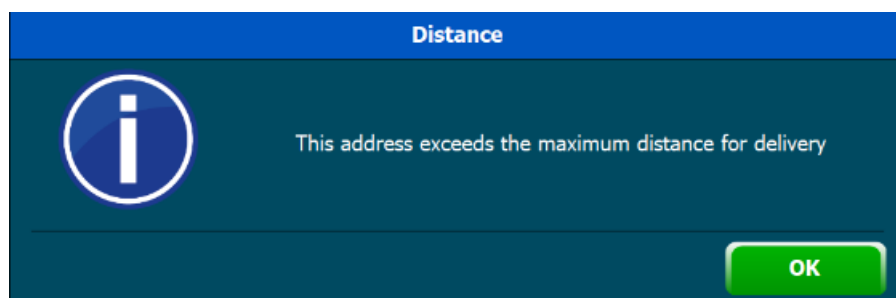
| From Mile | To Mile | Price |
|-----------|---------|-------|
| 0.00      | 2.00    | 2.00  |
| 2.00      | 4.00    | 3.00  |
| 4.00      | 6.00    | 4.00  |
| 6.00      | 8.00    | 5.00  |
| 8.00      | 10.00   | 6.00  |
| 10.00     | 12.00   | 7.00  |

- **Update Customer Addresses** – This function requires a working internet connection and is used to update the longitude and latitude and calculate the distance for all customer addresses. This is typically only used once to update the existing this customer addresses.  
**Note:** Touch must be restarted after entering the Postcode setting before using function.

#### Applying the Delivery Charge:

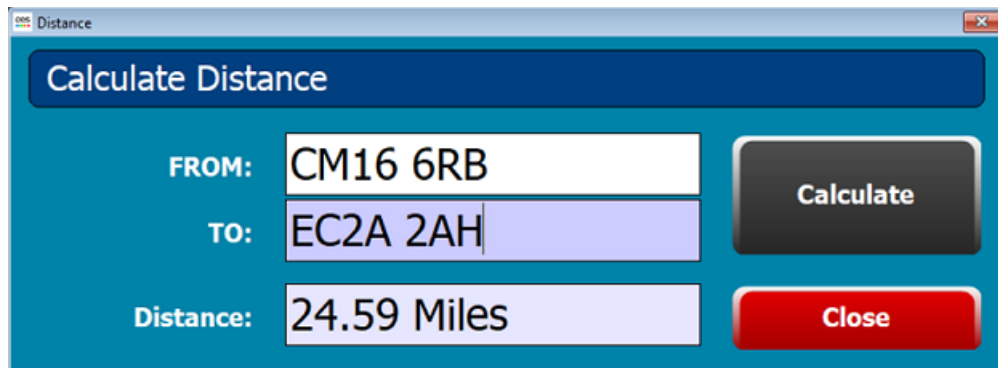
The delivery charge is applied when a customer is open in sales mode by using the button command **DELIVERYCHARGE**. The Delivery PLU set in the Delivery charges settings is used and will charge the price according to the distance.

The message below will show when pressing the DELIVERYCXHARGE button if the customer address exceeds the maximum distance for delivery.



**Calculate Distance:**

The screen below is run from a button command **DISTANCECALC** and can be used to calculate the distance between two postcodes. **Note:** You need a working internet connection to use this function.



The screenshot shows a Windows-style dialog box titled "Distance". It has a blue header bar with the text "Calculate Distance". Below the header, there are three input fields and two buttons. The first input field is labeled "FROM:" and contains the text "CM16 6RB". The second input field is labeled "TO:" and contains the text "EC2A 2AH". The third input field is labeled "Distance:" and contains the text "24.59 Miles". To the right of the "FROM:" and "TO:" fields is a dark grey button labeled "Calculate". To the right of the "Distance:" field is a red button labeled "Close".

| Field     | Value       |
|-----------|-------------|
| FROM:     | CM16 6RB    |
| TO:       | EC2A 2AH    |
| Distance: | 24.59 Miles |