

Wavesoft for Touch Version 10

Introduction:

Wavesoft have a tried and tested handheld order at table solution for iOS devices for wait staff to take orders at table and send back to Touch. This solution was used in previous version of Touch and by request has been added back into Version 10.0.040.

Wavesoft Licence:

Wavesoft needs to be licenced and the licence controls the number of HHT's that can be in use at any one time. Wavesoft can be licenced with or without using a Wavesoft dongle. The advantage of using a dongle is if the till that runs the Wavesoft Wireless Link goes down and needs replacing the dongle can be moved to the new terminal and the licence will continue to work.

If using Wavesoft without a dongle and the till running Wavesoft need replacing a new licence file will be required for the replacement till. Wavesoft are based in Canada so there could be a 24-hour delay in getting a new licence code generated.

To apply for a Wavesoft licence CES need to provide Wavesoft with either a dongle key number or the machine generated code that is unique to each PC. For customers who do not wish to use a dongle the Wavesoft software needs to be installed and the WirelessLink.exe found in the C:\WaveSoft\wBoxSDK\Utility folder needs to be run. That will then populate a file named licence.txt that can be found in the same folder. The licence.txt file needs to be forwarded to CES and used for the licence application.

If a Wavesoft dongle is being used and the dongle is connected the dongle number will get populated in the licence.txt file when running the WirelessLink.exe. In most cases CES will have supplied the Wavesoft dongle and will know the dongle number already when applying for the Wavesoft licence.

Wavesoft Wireless Link Installation

The Wavesoft Wireless link is the interface that communicates with the iOS devices running the Wavesoft app and needs to be installed on one terminal, typically the master till. This runs alongside the Touch Wavesoft Console that also runs on the same terminal which is the interface that is used to send the data back and forth between Touch and Wavesoft.

Step 1 – Install Wavesoft Wireless Link

- Download the Wavesoft for v10 zip file from the link below and extract to C: Drive
http://www.cessoftware.com/downloads/Wavesoft_For_v10.zip
- Run **Setupdev1.7.exe** found in the Wavesoft for v10 zip file to install Wavesoft on the till running the Wavesoft Wireless link.

Step 2 – Set up Shortcut for the Wireless link

The Wavesoft installer will create a shortcut in startup for WSstart.exe that will run the wireless link on a on a countdown timer. The WSstart.exe can be removed from startup and replaced with a shortcut for the WirelessLink.exe that is required to run the Wavesoft integration.

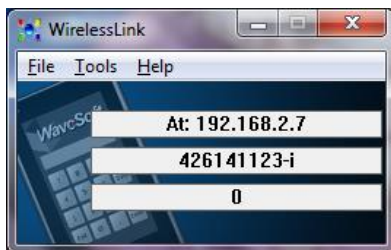
- The Wireless link is located in <C:\WaveSoft\wBoxSDK\Utility\WirelessLink.exe>

Step 3 – Licence Wavesoft

- Connect the Wavesoft dongle to a USB port on the PC / terminal that is running the Wireless link and wait for Windows to install it, when it is installed correctly a red light will appear on the dongle. For Windows 10 you will need to install the HASP dongle driver found in the Wavesoft_For_V10 zip file to get the dongle working.
- Copy the 'license.wps' file provided by Wavesoft into <C:\WaveSoft\wBoxSDK\Utility>

Step 4 – Check the WirelessLink runs

- Click on the Wireless Link shortcut and if licenced correctly the screen below will appear showing the IP address of the PC it is running on. (this will be required later for setting up the IOS device).



Touch setup for Wavesoft:

Touch needs to be licensed for Wavesoft and have the Wavesoft.ini file in place to enable the Wavesoft settings for Operators, Departments, Charge Sheets and Tenders.

Step 1 – Setup Touch for Wavesoft on all tills

- Make sure the touch licence has the Wavesoft Module enabled on every till.
- Copy the **Wavesoft.ini** file found in the Wavesoft_For_v10 zip file into the Touch folder for every till.

Step 2 – Set up the till running the Wavesoft link

- Copy the TouchWavesoftConsole.exe found in the Wavesoft_For_v10 zip file into the Touch folder of the till running the wireless link
- Set up a shortcut to run the TouchWavesoftConsole.exe
- Add the setting **MONITORWAVESOFTCONSOLE=YES** to the touch.ini file (this will monitor the Wavesoft Console every 30 seconds to ensure it is running).

Step 3 – Set Wavesoft Operators

- To enable an operator to be able to use the Wavesoft HHT's the Wavesoft operator box as shown below needs to be ticked and a Sign On Code is required for use on the HHT's.

Step 4 – Set Wavesoft Departments

- Tick the 'Use in Wavesoft' setting for any departments required for the Wavesoft app.
- The sequence number setting can be used to set the order the department buttons will display on the Wavesoft app ('1' will be the first button '2' the second etc).
- The Text Colour and Back Colour settings are used to set the department colours on the Wavesoft app.

Product Departments Edit by Grid

Department Code: 101 Search ☒ Default Department

Description: Beer ☐ Skoop Department ☐ Hidden for Skoop

Group: Bar Add ☐ Dineout Discount ☒ Use in Wavesoft Sequence: 999

Lalo Amount: 0.00 Sage Department: 0

Halo Amount: 10000.00 Sage Nominal Code: BAR

Max. Discount (%): 0.00

Loyalty Points: 0 per Pounds Margin (%): 0.00

Text Colour: X Back Colour: X

Step 5 – Wavesoft Product Settings

- Text and Back colour settings can be used to change the colours for individual products and will override the department colours.
- Exclude from Dept/Update setting if tick will not show the product on the Wavesoft app or in department screens on Touch.
- The sequence number will set the order the product shows on both the Wavesoft app and the department screens on Touch.

Product Items

PLU: 1010001 Search Create Next

Description: Heineken Draught Search Copy Paste

Profile Settings Options Menu/Condiments Remotes/Labels/Ghost Items Picture Dept. Details

Product Colouring on Department Screens

Text Colour: X

Back Colour: X

Exclude from the Dept/Update ☐

Sequence: 999

Step 6 – Set Wavesoft Charge sheets

- Tick the 'Use in Wavesoft' setting for any charge sheets that are required for the Wavesoft app.
- Ticking the 'Use in Wavesoft' setting will enable the Wavesoft tab used for print settings.

Charge Sheet Configuration

Charge Number 1

Title Tables

Numbers of sheets 25

Reference lines 7

Compulsory ref lines 0

Controls	Bookings	Receipt Comments	Reference Prompts	Wavesoft
<div> <div>Compulsory Final Receipt <input type="checkbox"/></div> <div>Receipt On Entry <input type="checkbox"/></div> <div>Allow End Of Day <input checked="" type="checkbox"/></div> <div>Store with No Items <input type="checkbox"/></div> </div>	<div> <div>Signature On Receipt <input type="checkbox"/></div> <div>Use Covers <input checked="" type="checkbox"/></div> <div>Final Receipt (Document) <input checked="" type="checkbox"/></div> <div>Link Customer Database <input checked="" type="checkbox"/></div> </div>	<div> <div>Use Seat Numbers <input type="checkbox"/></div> <div>No. of Seats 0</div> <div>Delivery Driver <input type="checkbox"/></div> </div>	<div> <div>Use in Wavesoft <input checked="" type="checkbox"/></div> </div>	<div> <div> <input type="checkbox"/> Compulsory Cover Charge <div> PLU <div></div> </div> </div> </div>

By default, requested bills from the Wavesoft app will print on the same printer used by the till that is running the Wireless Link and Wavesoft Console.

The settings below can be used to set use a specific remote printer for requested bills from the Wavesoft app. The example below is showing 2 remote printers in use set by a range of tables. A single setting can be used to print all requests bills from the Wavesoft app to the same remote printer. In this example with 25 tables, you would set 'From 1' 'To 25' with a single Remote No.

Charge Sheet Configuration

Charge Number 1

Title Tables

Numbers of sheets 25

Reference lines 7

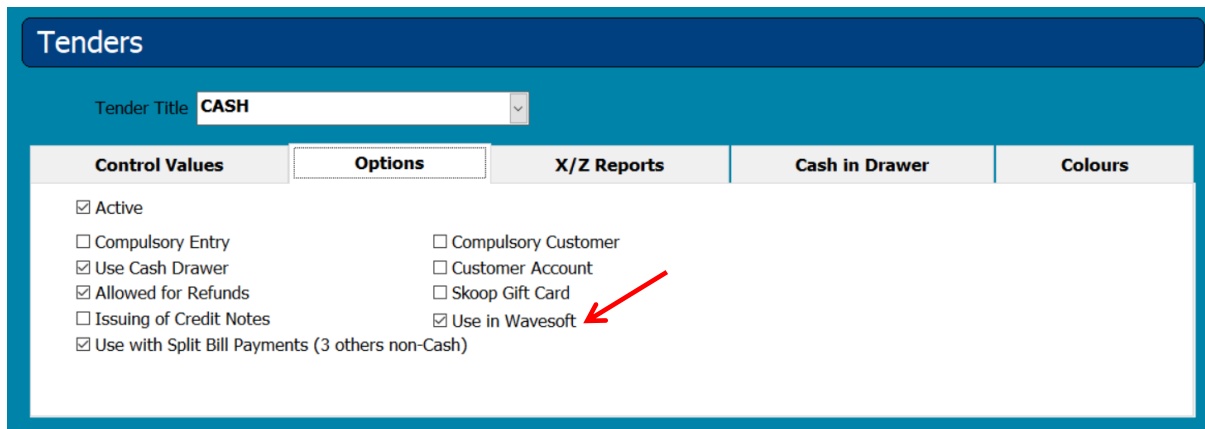
Compulsory ref lines 0

Controls	Bookings	Receipt Comments	Reference Prompts	Wavesoft									
<table border="1"> <thead> <tr> <th>From</th> <th>To</th> <th>Remote No</th> </tr> </thead> <tbody> <tr> <td>1</td> <td>10</td> <td>4</td> </tr> <tr> <td>11</td> <td>25</td> <td>5</td> </tr> </tbody> </table> <div> <div>11</div> <div>25</div> <div>5</div> </div> <div> <div>Add</div> <div>Edit</div> <div>Delete</div> </div>					From	To	Remote No	1	10	4	11	25	5
From	To	Remote No											
1	10	4											
11	25	5											

Step 7 – Set Wavesoft Tenders

Payments can be taken using the Wavesoft app if required and will close the table on Touch. For integrated card payments CES would recommend using the Payment sense Pay at Table solution that can be used alongside Wavesoft.

- Tick the 'Use in Wavesoft' setting for any Tenders that are required for the Wavesoft app.



Tenders

Tender Title: **CASH**

Control Values	Options	X/Z Reports	Cash in Drawer	Colours
<input checked="" type="checkbox"/> Active <input type="checkbox"/> Compulsory Entry <input checked="" type="checkbox"/> Use Cash Drawer <input checked="" type="checkbox"/> Allowed for Refunds <input type="checkbox"/> Issuing of Credit Notes <input checked="" type="checkbox"/> Use with Split Bill Payments (3 others non-Cash) <input type="checkbox"/> Compulsory Customer <input type="checkbox"/> Customer Account <input type="checkbox"/> Skoop Gift Card <input checked="" type="checkbox"/> Use in Wavesoft				

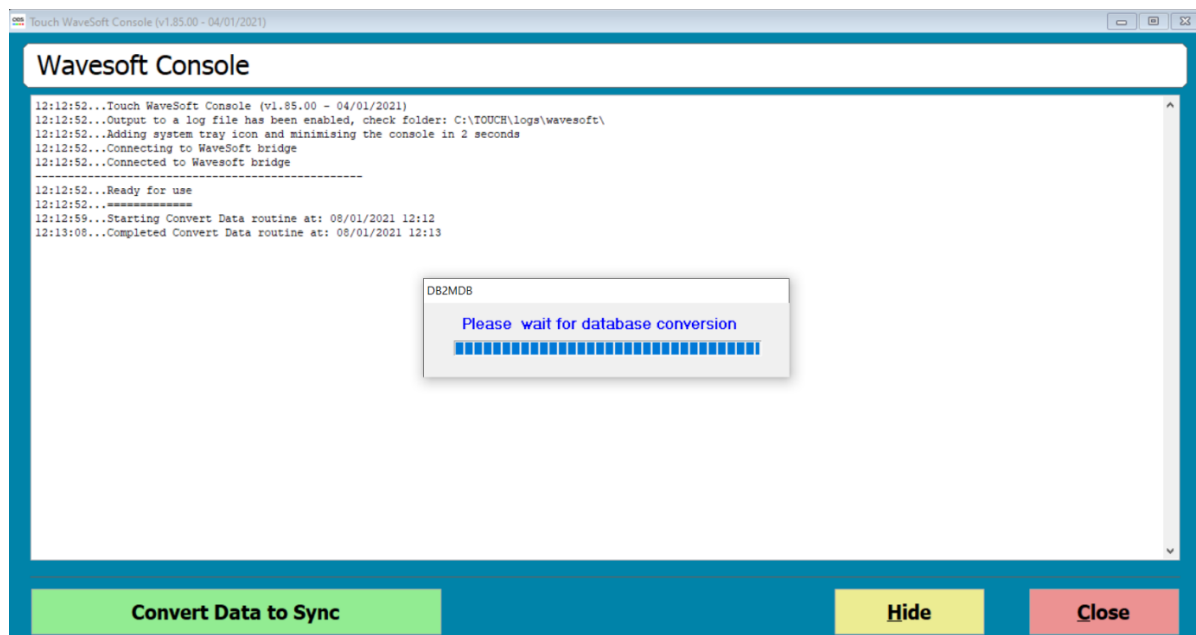
Wavesoft Console

The Wavesoft Console is the middleware that runs in the background to pass data between Touch and Wavesoft. It has a built-in auto update function to check for updates when it starts.

Syncing Data

Anytime time changes are made on Touch for anything that will affect Wavesoft a sync is required to update Wavesoft. The sync is done via the Wavesoft Console.

- Click on the Wavesoft Console icon found in the taskbar to run in full screen mode.
- Press the 'Convert Data to Sync' button and wait for the sync to complete.



Touch WaveSoft Console (v1.85.00 - 04/01/2021)

Wavesoft Console

```

12:12:52...Touch WaveSoft Console (v1.85.00 - 04/01/2021)
12:12:52...Output to a log file has been enabled, check folder: C:\TOUCH\logs\wavesoft\
12:12:52...Adding system tray icon and minimising the console in 2 seconds
12:12:52...Connecting to WaveSoft bridge
12:12:52...Connected to Wavesoft bridge
-----
12:12:52...Ready for use
12:12:52...
12:12:59...Starting Convert Data routine at: 08/01/2021 12:12
12:13:08...Completed Convert Data routine at: 08/01/2021 12:13
    
```

DB2MDB

Please wait for database conversion

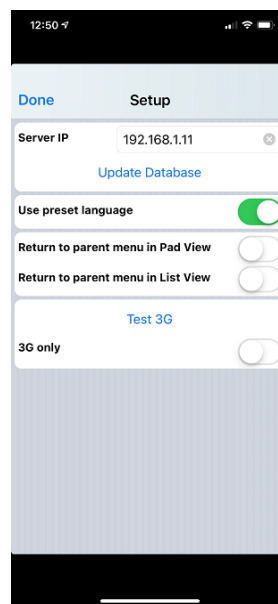
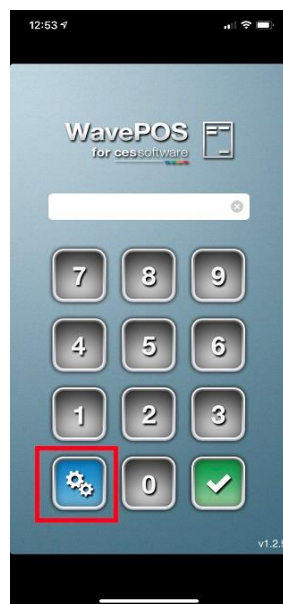
Convert Data to Sync Hide Close

Note: After a sync is done on the Wavesoft Console all iOS devices running the Wavesoft app will require a database update to pick up any changes.

Wavesoft iOS App setup

Step 1 – Setting up the Wavesoft app

- On your iOS device go to the Apple App store and search for the **Wavepos for CES App** and download it.
- Run the Wavepos for CES app on the iOS device.
- Enter 999 and press the blue button with the gears to enter the setup page.
- Enter the IP address for the terminal running the Wireless Link into the Server IP.
- Press the Update Database button (the Wireless link and Wavesoft console both need to be running)



- Press the Done button in the top left corner of the screen, the iOS device is ready to use.

Note: Once the setup has been completed and the Update Database has been done the default 999 code to get into the Setup page will no longer work. From that point onwards you need to use a Wavesoft operator code set up in Touch.

Service Charge:

Service charge can be used with Wavesoft, if in use on Touch the service change settings get picked up by the Wavesoft Console. Should any service charge settings be updated on Touch the Wavesoft Console needs to be restarted to pickup the changes.

Note: Wavesoft can only handle full percentages so 12.5% set in Touch will round to 13% on Wavesoft.

When in use service charge will print on requested bills from the HHT's and be included on the payment screen.

Example Wavesoft App Screens

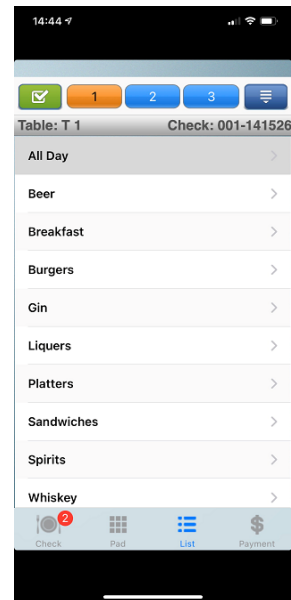
Tables



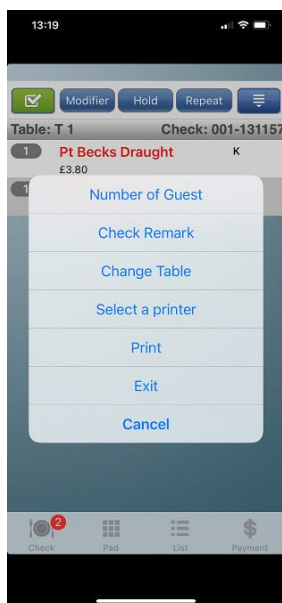
Departments Pad



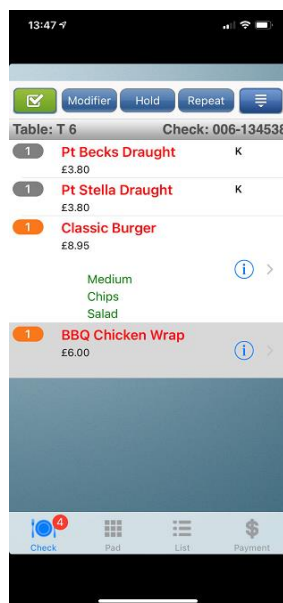
Department List



Dropdown Options



Check



Payment

