

USB Printing for Touch

OPOS Utility:

For USB printing on Touch you need to use OPOS and set a Logical Device Name or LDN. Each manufacturer will have their own OPOS utility for Epos Receipt printers and you need to get the correct OPOS utility for the make and model printer you are using. You can usually download the OPOS utilities from the manufacturer's websites.

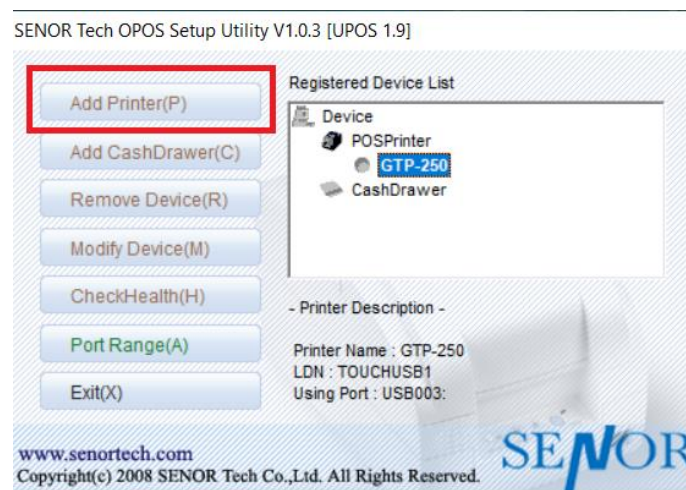
In most cases you also need to install the Windows printer driver first.

The example images below are for a Senor GTP250 receipt printer.

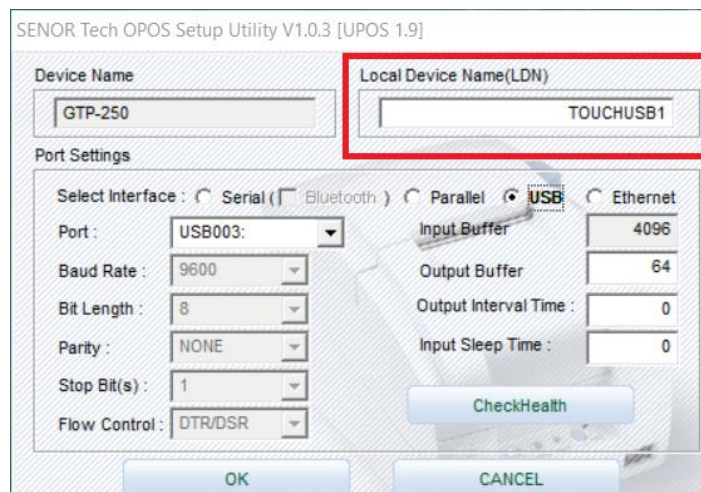
Step 1, Install the Windows Driver

Step 2, Install the OPOS utility

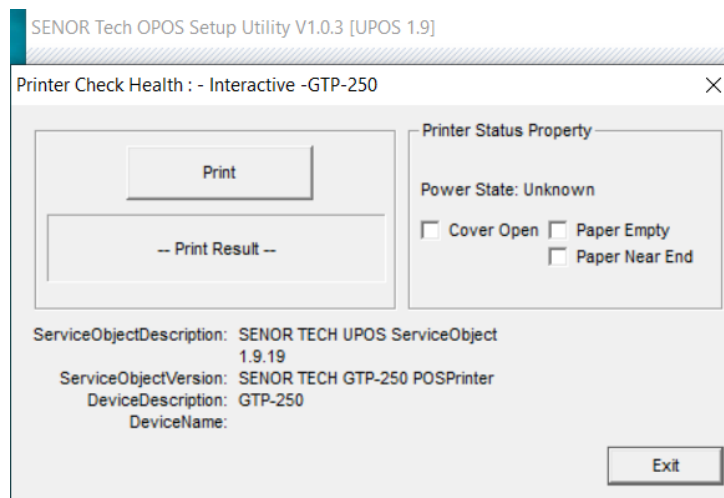
Step 3, Open the OPOS utility and add the printer



Step 4, Set the Logical Device Name (LDN)

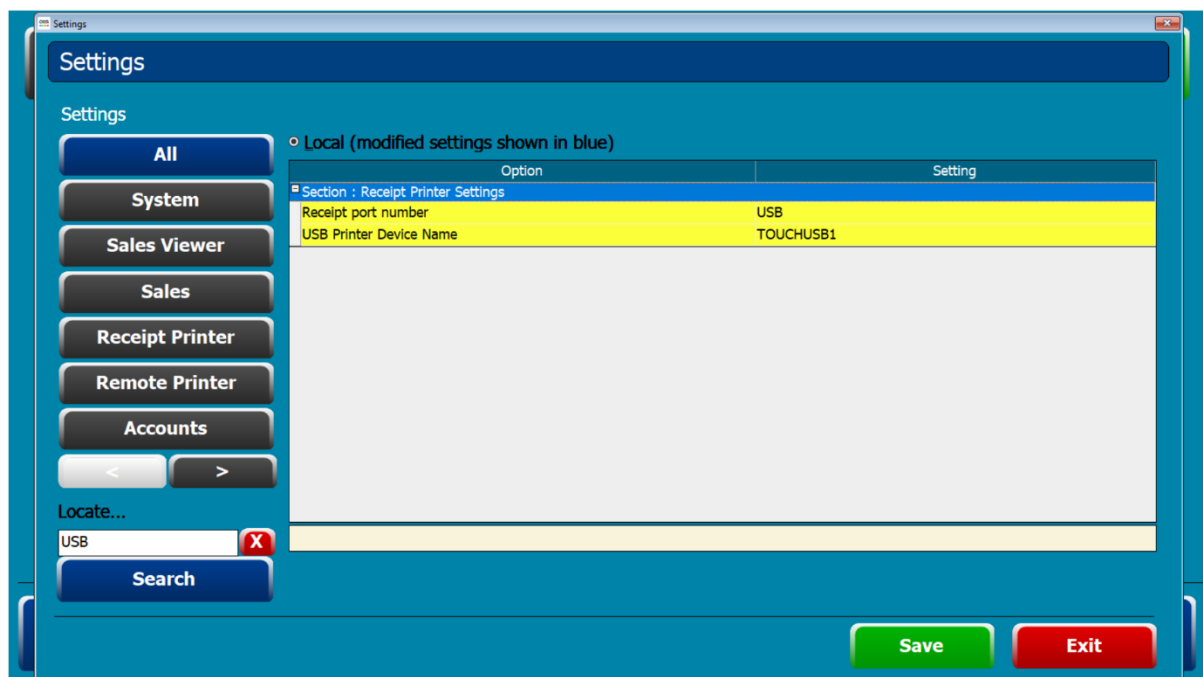


Step 5, Do a test print from the OPOS utility



Once at this stage when you can do a successful test print from the OPOS utility, close the utility, start Touch and go into the Back-Office settings.

The two settings below need to be set on Touch. The USB Printer Device name must match the Logical Device Name set on the OPOS utility.



USB printers are also supported for Remote Printer and need specific Logical Names Set as below.

USB1 = TOUCHUSB1

USB2 = TOUCHUSB2

USB3 = TOUCHUSB3 and so on.

Remote Printers v3.6.7 (01/04/2022) (C:\TOUCH\remote\) (C:\TOUCH\remote\)

Remote Printers

Printer	Port	Baud Rate	Copy To	Re-Direct	Copies	Alarm	KP	IP Address	Status
POS	USB1	0	0	0	1	<input type="checkbox"/>	<input type="checkbox"/>		Printing Disabled
MAIN KITCHEN	USB1	0	0	0	2	<input type="checkbox"/>	<input type="checkbox"/>		
MEATS	USB2	0	0	0	1	<input type="checkbox"/>	<input type="checkbox"/>		
PIZZA	USB3	0	0	0	1	<input type="checkbox"/>	<input type="checkbox"/>		
	USB4	0	0	0	1	<input type="checkbox"/>	<input type="checkbox"/>		
BAR	USB5	0	0	0	1	<input type="checkbox"/>	<input type="checkbox"/>		
Remote 6	USB6	0	0	0	1	<input type="checkbox"/>	<input type="checkbox"/>		
Remote 7	USB7	0	0	0	1	<input type="checkbox"/>	<input type="checkbox"/>		
Remote 8		0	0	0	1	<input type="checkbox"/>	<input type="checkbox"/>		
Remote 9		0	0	0	1	<input type="checkbox"/>	<input type="checkbox"/>		
Remote 10		0	0	0	1	<input type="checkbox"/>	<input type="checkbox"/>		

Start Printing Hide Reset Close